

GREENWOOD BUSINESS PARK

301 BURWOOD HWY,
BURWOOD VIC 3125

SLS SPECIALISED
LIGHTING
SOLUTIONS

TURNKEY LIGHTING SOLUTIONS



CLIENT OVERVIEW

Greenwood Business Park, Burwood is a well maintained and highly exposed corporate Business Park consisting of three buildings on a 3.4 hectare site.

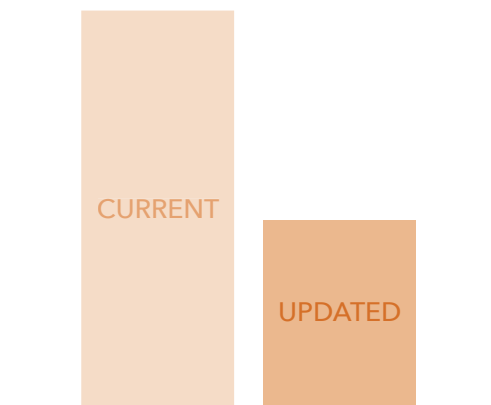
The Park is managed by Knight Frank, who not only manage but own properties worldwide, predominantly in the UK and Australia.

CHALLENGES

The cark park suffered from poor lighting. Looking to improve the existing lighting, Knight Frank engaged SLS to provide a better lighting solution. The challenge was to lift the lighting levels to improve visibility and safety while greatly reducing power consumption and maintenance costs.

GOVERNMENT REBATE

\$5,400



ANNUAL BILL AFTER INSTALLATION

ANNUAL BILL SAVINGS

\$7,813.80

PAY BACK PERIOD

18 MONTHS

TOTAL PROJECT COST

\$20,338.43

TOTAL DISCOUNT

\$5,428.50

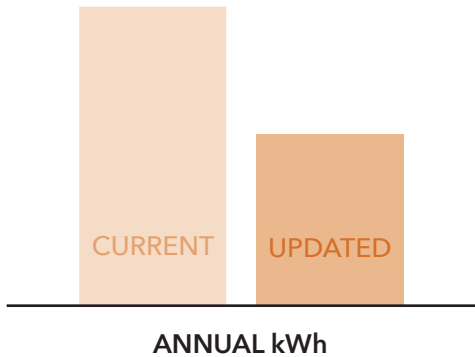
CO2 REDUCTION: 282 TONNES

GOV REBATE:

\$5,400.00

ENERGY SAVING SCHEME

\$48,836



ANNUAL kWh SAVINGS

52 %

PROCESS

- Consulted with facilities manager
- Conducted a complete energy lighting audit and design
- Provided a detailed proposal outlining power savings and ROI
- Managed install with one of SLS' approved contractors under the government schemes.

SOLUTION

The existing lighting was replaced one-for-one with a low wattage, high output LED batten which more than doubled the lux levels whilst reducing the energy bill.

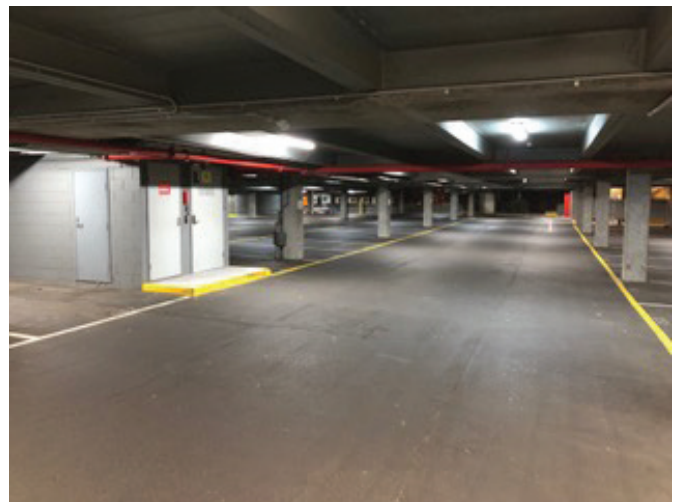
In addition to the savings, the car park is now much safer and easier to navigate.

SITE TRANSFORMATION

BEFORE



AFTER



Our values define how we aim to conduct ourselves and our business.

They help us to create value for our clients, our people and the communities in which we all live.

OUR PARTNER NETWORK



www.slsgrp.com.au | 1300 302 852